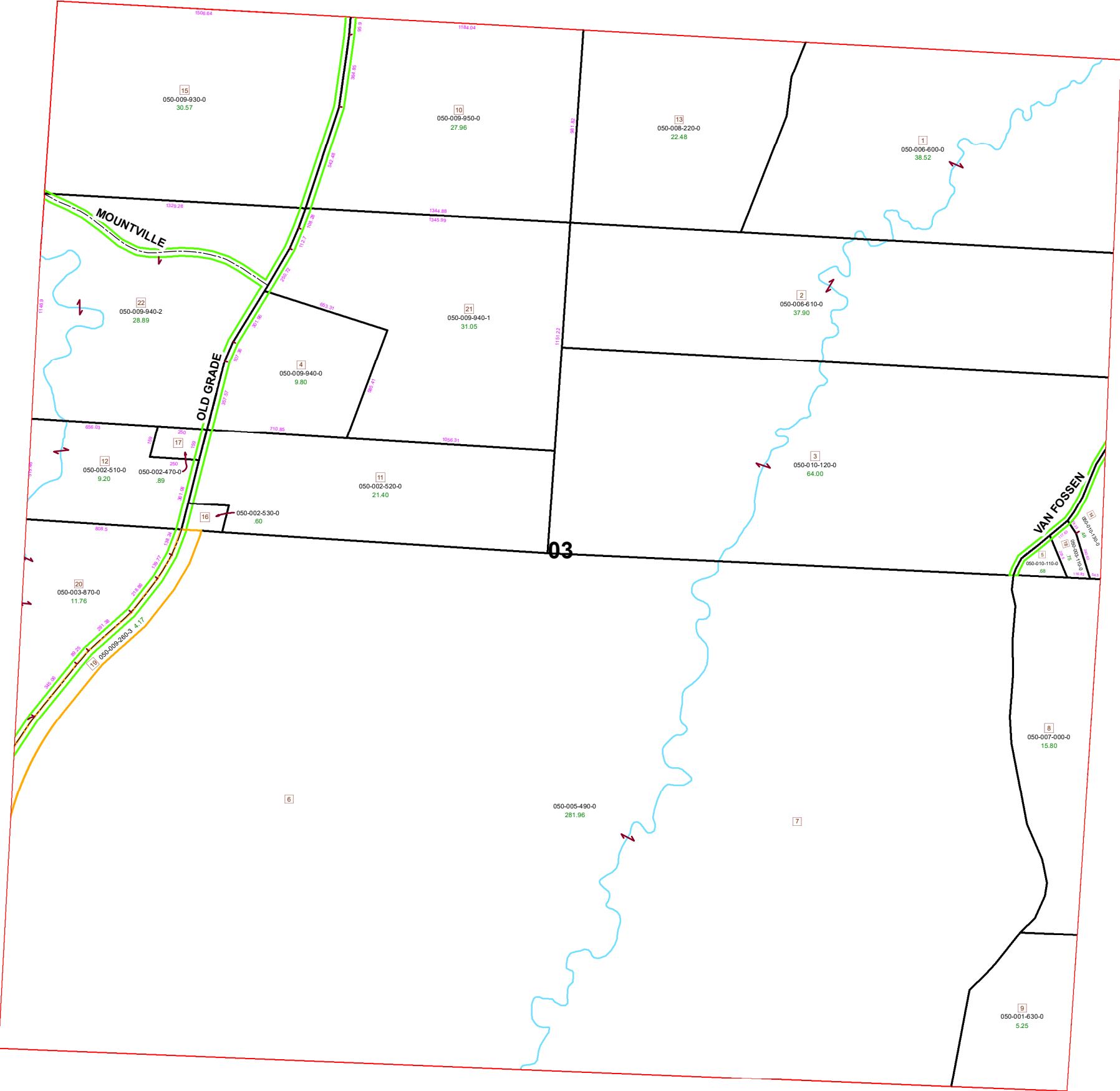


# HOMER TOWNSHIP SECTION 3 R13 TWP 7 MORGAN COUNTY, OH



PIN	VOL	PAGE	Owner	LegalDescr	Acres
050-009-930-0	OR219	3373	COLER JOHN E	R13 T07 S03 SD 15	30.57
050-001-630-0	OR234	2564	COMSTOCK BRUCE A	R13 T07 S03 SD 09	5.25
050-009-940-2	OR145	185	DOWNS CRAIG	R13 T07 S04 SD 22	28.897
050-003-870-0	OR	537	DOWNS CRAIG A	R13 T07 S03 SD 20	11.762
050-002-530-0	OR224	1034	DUNCAN DRIGGS PAMELA TOD-ALISHA N	R13 T07 S03 SD 16	0.6
050-002-520-0	OR224	1034	DUNCAN DRIGGS PAMELA TOD-ALISHA N	R13 T07 S03 SD 11	21.4
050-003-110-0	OR211	3204	HOSIER JERRY A	R13 T07 S03 SD 18	0.753
050-009-950-0	OR214	1620	KING DUANE E & PATSY	R13 T07 S03 SD 10 SURVIVO	27.96
050-008-220-0	OR215	1823	LEHNERT EDWARD L & JANE M TOD-WILLI	R13 T07 S03 SD 13	22.48
050-010-110-0	OR111	92	LIGHT JAMES C & SARA G	R13 T07 S03 SD 5 SURVIVOR	0.68
050-010-120-0	OR111	90	LIGHT JAMES C & SARA G	R13 T07 S03 SD 3 SURVIVOR	64
050-009-260-3	OR222	2175	LOWE BETTY M	R13 T07 S03 SD 19	4.17
050-005-490-0	OR222	2062	LOWE BETTY M	R13 T07 S03 SD 6-7 EX PT O	281.96
050-010-130-0	OR31	156	MCADAMS DAVID W & ZENAIDE T	R13 T07 S03 SD 14 SURVIVO	0.487
050-006-610-0	D.V 139	249	MURPHY CLAYTON J & VERONICA A	R13 T07 S03 SD 2	37.9
050-006-600-0	D.V 139	249	MURPHY CLAYTON J & VERONICA A	R13 T07 S03 SD 1	38.52
050-007-000-0	D.V 137	483	OLNEY ALLEN	R13 T07 S03 SD 8	15.8
050-002-470-0	OR234	3917	PERSINGER GARRETT & SAMANTHA	R13 T07 S03 SD 17 SURVIVO	0.898
050-002-510-0	OR234	3917	PERSINGER GARRETT & SAMANTHA	R13 T07 S03 SD 12	9.207
050-009-940-0	D.V 205	74	WELLS JAMES	R13 T07 S03 SD 4	9.803
050-009-940-1	OR100	204	WOLF DAVID W & JUDITH A	R13 T07 S03 SD 21 SURVIVO	31.05



Boundaries		
-----	Hidden	--- ROW
-----	Hydro	--- Section
-----	Roads	--- Township
-----	Lot	--- Parcels
-----	County	--- Parcel

